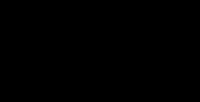
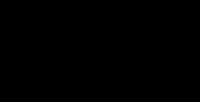




i n d u s t r i a l

HYGIENIC DESIGN

coming soon



INDEX

HEN Cassa Hygienic Design square solution <i>Hygienic Design enclosure with square solution</i>	4	HRAISE Kit di sollevamento e movimentazione Hygienic Design <i>Hygienic Design Series Lifting and Handling Kit</i>	14
HFN Cuffia a parete Hygienic Design <i>Hygienic Design Cover for ventilation system</i>	6	HCORK Ghiera cilindrica di tappatura Hygienic Design <i>Hygienic Design Cylindrical Seal</i>	16
HBG Bracci girevoli Hygienic Design <i>Hygienic Design swivel arms</i>	8	HLOCK Chiusura Hygienic Design <i>Hygienic Design locking system</i>	18
HGS/HGF Giunto girevole e fisso Hygienic Design <i>Hygienic Design fixed and swivel joints</i>	10	HANDLE HLock locking handle <i>HLock series locking system handle</i>	20
HSBG Supporto a parete Hygienic Design per giunti HGS117 e HGF117 <i>Hygienic Design wall bracket for joint HGS117 and HGF117</i>	12	HYNGE Cerniera Hygienic Design <i>Hygienic Design Hinge</i>	22
		HSEAL Guarnizione siliconica blu di collegamento igienico tra moduli <i>Silicone blu gasket for hygienic connection between modules</i>	24

CE EN62208



TYPE NEMA 4x, 4, 1, 12
Standard UL50–UL50E
File E474134



TYPE NEMA 4x, 4, 1, 12
Standard UL508A-UL50-UL50E
File E474135



No. 67

TYPE EL
CLASS I AUX
JUNE 2019

HEN

Cassa Hygienic Design square solution

Hygienic Design enclosure with square solution

SPECIFICHE STANDARD

- In acciaio inox Aisi 304 (EN 1.4301) finitura Scotch-Brite
- Anta cieca sp.2mm con profilo squadrato
- Cerniere esterne certificate EHEDG
- Apertura anta a 180° e portata fino a 45 Kg
- Chiusura tramite box certificati EHEDG
- Guarnizione in silicone blu conforme alle linee guida FDA
- Cielo inclinato di 30° che copre l'anta
- Piastra interna in FeZn sp.2,5mm
- Certificata 3A

A RICHIESTA

- In acciaio inox Aisi 316 (EN 1.4404)
- Boccole M6 cieche sul retro
- Personalizzazioni a disegno

STANDARD SPECIFICATIONS

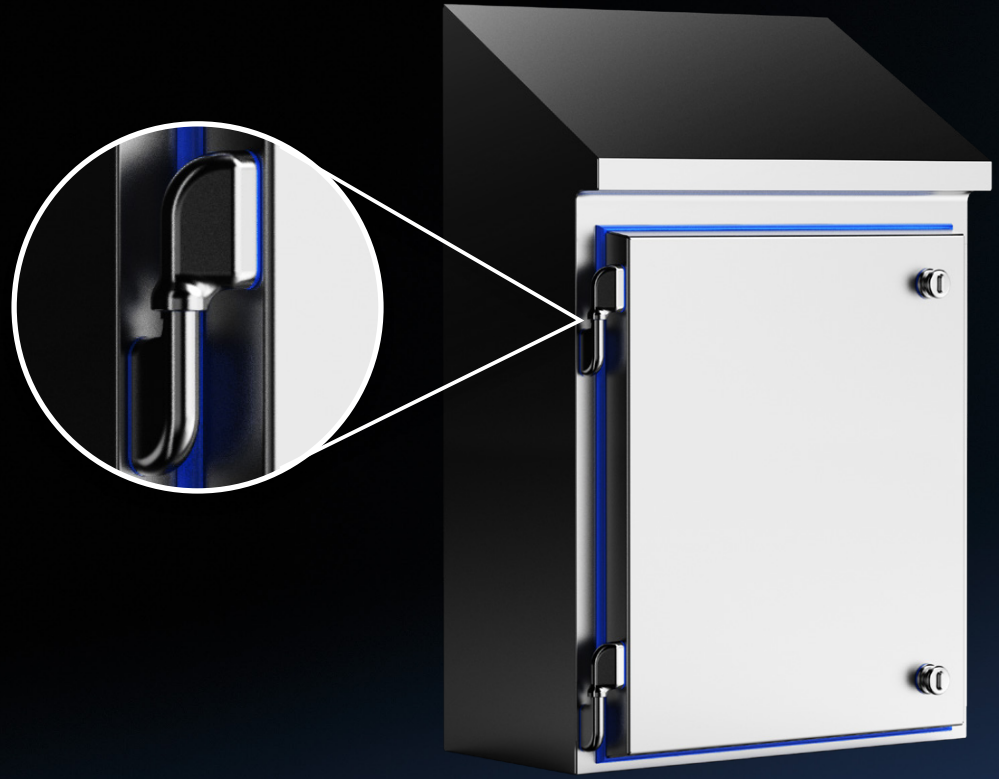
- *Stainless steel AISI 304 (EN 1.4301), Scotch-Brite finishing*
- *2mm thick door with square profile*
- *Patented and EHEDG Certified external hinges*
- *180° door opening and maximum load up to 45Kg*
- *EHEDG certified locking system*
- *Silicon blue gasket following FDA requirements.*
- *30° sloping roof covering the door*
- *Internal mounting plate in galvanized steel, 2.5 mm thick*
- *3A certified*

ON REQUEST

- *In Stainless steel AISI 316 (EN 1.4404), Scotch-Brite finishing*
- *M6 insert on the back of the enclosure*
- *Design according to customer's drawing*



Hygienic Design



HFN

Cuffia a parete Hygienic Design

Hygienic Design Cover for ventilation system

SPECIFICHE STANDARD

- In acciaio inox Aisi 304 (EN 1.4301)
- Guarnizione in silicone blu conforme alle linee guida FDA

A RICHIESTA

- In acciaio inox Aisi 316 (EN 1.4404)

STANDARD SPECIFICATIONS

- *Stainless steel AISI 304 (EN 1.4301), Scotch-Brite finishing*
- *Silicon blue gasket following FDA requirements*

ON REQUEST

- *In Stainless steel AISI 316 (EN 1.4404), Scotch-Brite finishing*



Hygienic Design



HGB

Bracci girevoli Hygienic Design

Hygienic Design swivel arms

SPECIFICHE STANDARD

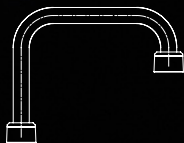
- In acciaio inox Aisi 304 (EN 1.4301) finitura Scotch Brite
- Tubo diametro 60,3mm
- Diverse possibilità di sagomatura "I, J, L, S" e dimensione a seconda delle specifiche esigenze
- Predisposti per essere saldati ai nostri giunti girevole e fisso Hygienic Design

STANDARD SPECIFICATIONS

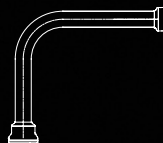
- *Stainless steel AISI 304 (EN 1.4301), Scotch-Brite finishing*
- *Tube with a diameter of 60,3mm*
- *Available in 4 different shapes "I, J, L, S" and sizes according to specific requirements*
- *Conceived to be welded to our Hygienic Design fixed and swivel joints*



HGB-I



HGB-J



HGB-L



HGB-S



Hygienic Design



HGS / HGF

Giunto girevole e fisso Hygienic Design

Hygienic Design fixed and swivel joints

SPECIFICHE STANDARD

- In acciaio inox Aisi 304 (EN 1.4301) finitura Scotch-Brite
- Certificato EHEDG
- Versione girevole HGS117 o fissa HGF117
- Predisposto per essere saldato a tubo diam. 60,3mm
- Guarnizioni in silicone blu conforme alle linee guida FDA
- Angoli e particolari raggianti per facilitare le operazioni di pulizia e garantire l'igienicità del prodotto nel tempo

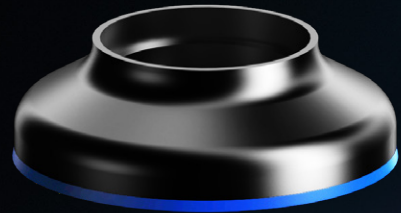
STANDARD SPECIFICATIONS

- *Stainless steel AISI 304 (EN 1.4301), Scotch-Brite finishing*
- *EHEDG certified*
- *Swivel HGS 117 or fixed HGF 117 version*
- *Conceived to be welded to tube diam. 60,3*
- *Silicon blue gasket following the FDA requirements*
- *Corners and rounded details for easy cleaning and maintain product hygiene over time*

PATENTED



Hygienic Design



HSBG

Supporto a parete Hygienic Design per giunto girevole HGS117 e fisso HGF117

Hygienic Design wall bracket for swivel joint HGS117 and fixed joint HGF117

SPECIFICHE STANDARD

- In acciaio inox Aisi 304 (EN 1.4301)
- Predisposto per il fissaggio a parete, completo di guarnizione blu in silicone conforme alle linee guida FDA
- Coperchio inferiore di ispezione completo di guarnizione blu in silicone conforme alle linee guida FDA e di viteria Hygienic Design

STANDARD SPECIFICATIONS

- *Stainless steel AISI 304 (EN 1.4301), Scotch-Brite finishing.*
- *Conceived for wall mounting, with Silicon blue gasket following FDA requirements*
- *Complete with inspection flange with Silicon blue gasket following FDA requirements*



HRAISE

Kit di sollevamento e movimentazione Hygienic Design

Hygienic Design Series Lifting and Handling Kit

SPECIFICHE STANDARD

- In acciaio verniciato

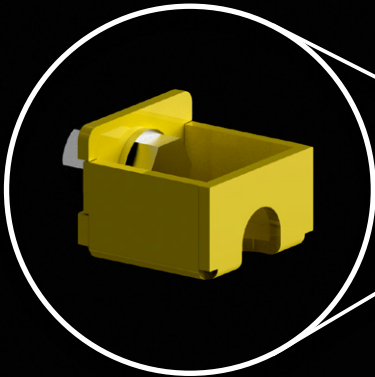
STANDARD SPECIFICATIONS

- *Painted steel*





Hygienic Design



HCORK

Ghiera cilindrica di tappatura Hygienic Design

Hygienic Design Cylindrical Seal

SPECIFICHE STANDARD

- In acciaio inox AISI 316 (EN 1.4404)
- Certificato EHEDG
- Certificato 3A
- Fornito a completamento del sistema di chiusura HLock su ante armadi
- Fornito a completamento del kit di sistema di sollevamento e movimentazione

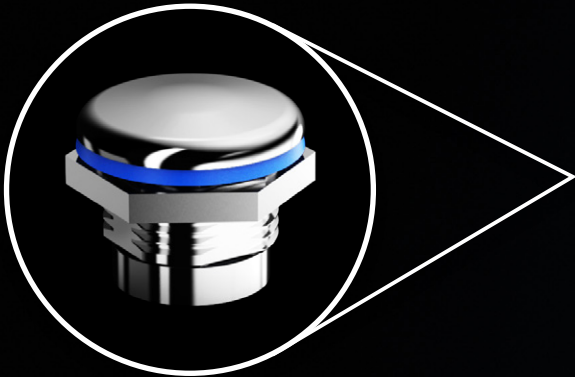
STANDARD SPECIFICATIONS

- In Stainless steel AISI 316 (EN 1.4404), Scotch-Brite finishing
- EHEDG certified
- 3A certified
- Supplied to complement HLock locking system on cabinet doors
- Supplied to complement lifting and handling system kit





Hygienic Design



HLOCK

Sistema di chiusura Hygienic Design
Hygienic Design locking system

SPECIFICHE STANDARD

- In acciaio inox Aisi 316 (EN 1.4404)
- Certificato EHEDG
- Certificato 3A
- Garantisce precisione di chiusura nel tempo

STANDARD SPECIFICATIONS

- *Stainless steel AISI 316 (EN 1.4404), Scotch-Brite finishing*
- *EHEDG certified*
- *3A certified*
- *Ensures locking accuracy over time*

PATENTED



HANDLE

Maniglia per chiusura sistema serie HLock

HLock series locking system handle

SPECIFICHE STANDARD

- In acciaio verniciato
- Facilita la rotazione del cilindro per apertura e chiusura della serie HLock
- Agevola l'impugnatura da parte dell'utente

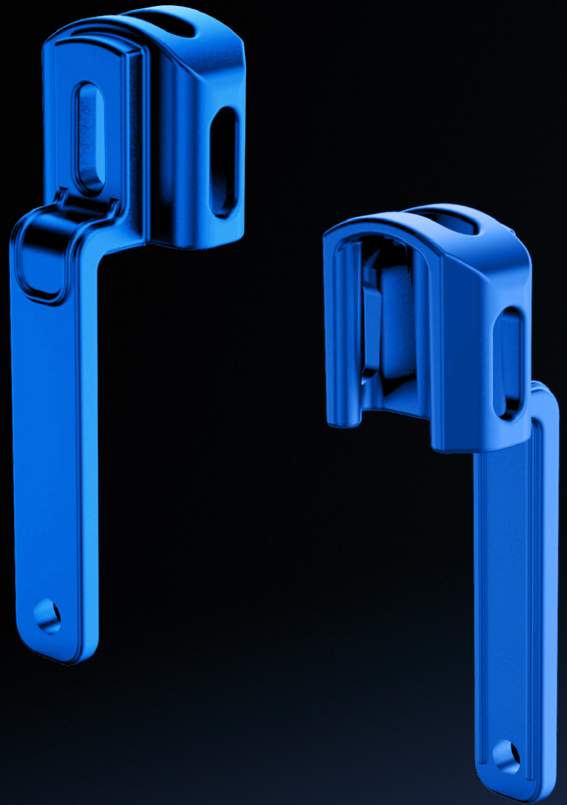
STANDARD SPECIFICATIONS

- *Painted steel*
- *Facilitates cylinder rotation to open and close HLock range*
- *Ease of use for the operator*

PATENTED



Hygienic Design



HYNGE

Cerniera Hygienic Design

Hygienic Design Hinge

SPECIFICHE STANDARD

- In acciaio inox AISI 316 (EN 1.4404)
- Certificata EHEDG
- Certificata 3A
- Robusta per garantire stabilità anche con carichi importanti
- Stabile: assicura una chiusura dell'anta precisa nel tempo
- Rotazione oltre i 180°, permette installazioni in batteria
- Avvitata e facilmente smontabile per le operazioni di pulizia, igienizzazione e/o sostituzione

STANDARD SPECIFICATIONS

- *Stainless steel AISI 316 (EN 1.4404), Scotch-Brite finishing*
- *EHEDG Certified*
- *3A certified*
- *Sturdy: to ensure stability under heavy loads*
- *Stable: It ensured the perfect closing of the door over time*
- *Rotation over 180°, it allows modular installations;*
- *Screwed: Easily removable for cleaning, sanitization and/or replacement operations*

PATENTED



Hygienic Design



HSEAL

Guarnizione siliconica blu di collegamento igienico tra moduli

Silicone blu gasket for hygienic connection between modules

SPECIFICHE STANDARD

- In silicone blu conforme alle linee guida FDA
- Garantisce la perfetta chiusura di tutte le fessure che si formano tra moduli assemblati: nell'unione di due armadi, tra tettuccio e armadio, tra armadio e zoccolo, nell'unione di due casse...

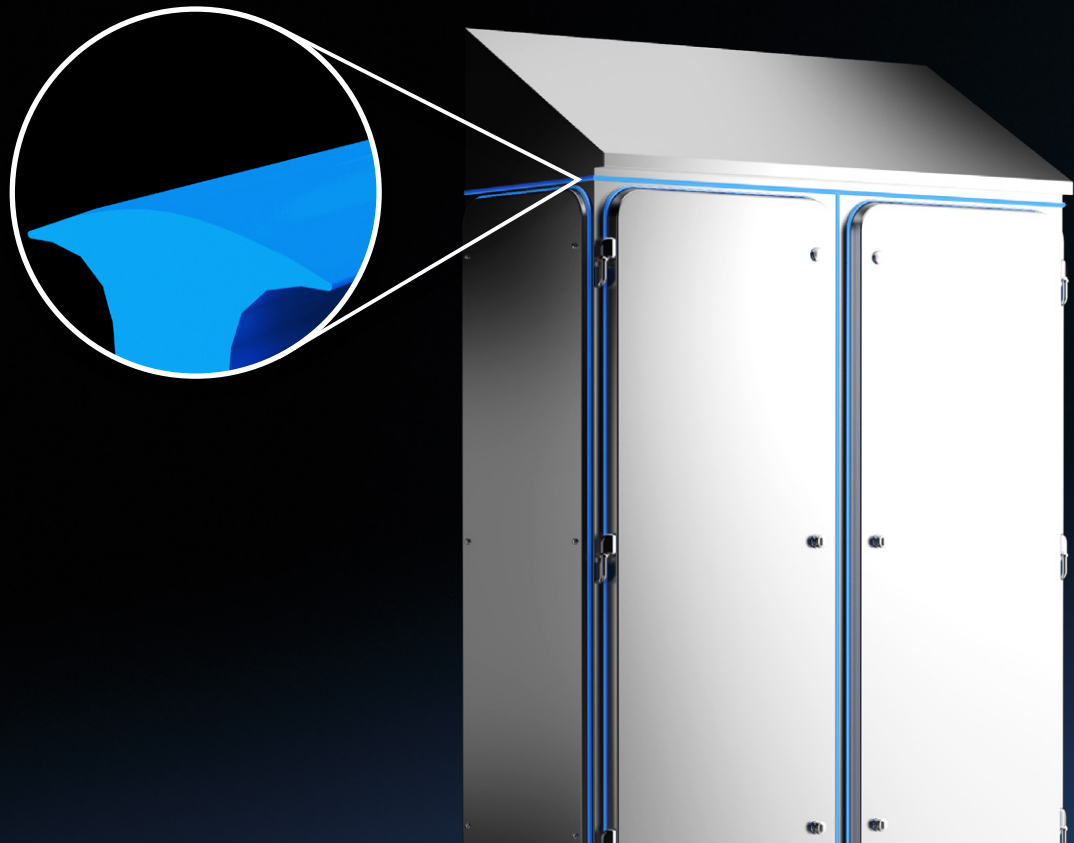
STANDARD SPECIFICATIONS

- *Silicon blue gasket following FDA requirements*
- *Ensures the perfect closure of any gap that may form when two modules are assembled together: for example between roof and cabinet, between cabinet and plinth, between two enclosures...*

PATENTED



Hygienic Design





Scarica la versione digitale del Catalogo Generale
Download the full digital version of the General Catalog
Téléchargez la version numérique complète du Catalogue Général
Laden Sie die digitale Vollversion herunter



Scarica la versione digitale del Catalogo Hygienic Design
Download the full digital version of the Hygienic Design Catalog
Téléchargez la version numérique complète du catalogue Hygienic Design
Laden Sie die digitale Vollversion herunter



Scarica tutte le Schede Tecniche del Catalogo Hygienic Design
Download all the Technical Sheets of the Hygienic Design Catalog
Téléchargez toutes les Fiches Techniques du Catalogue Hygienic Design
Laden Sie alle Technischen Datenblätter herunter



EiQ industrial S.R.L.

Via Lago di Alleghe, 48 z.i.

36015 Schio (Vicenza) Italy

TEL +39 0445 575715

FAX +39 0445 579063

EMAIL info@eiqindustrial.com

WEB eiqindustrial.com



eiquindustrial.com

TEL. +39 0445 575715 **MAIL** info@eiquindustrial.com